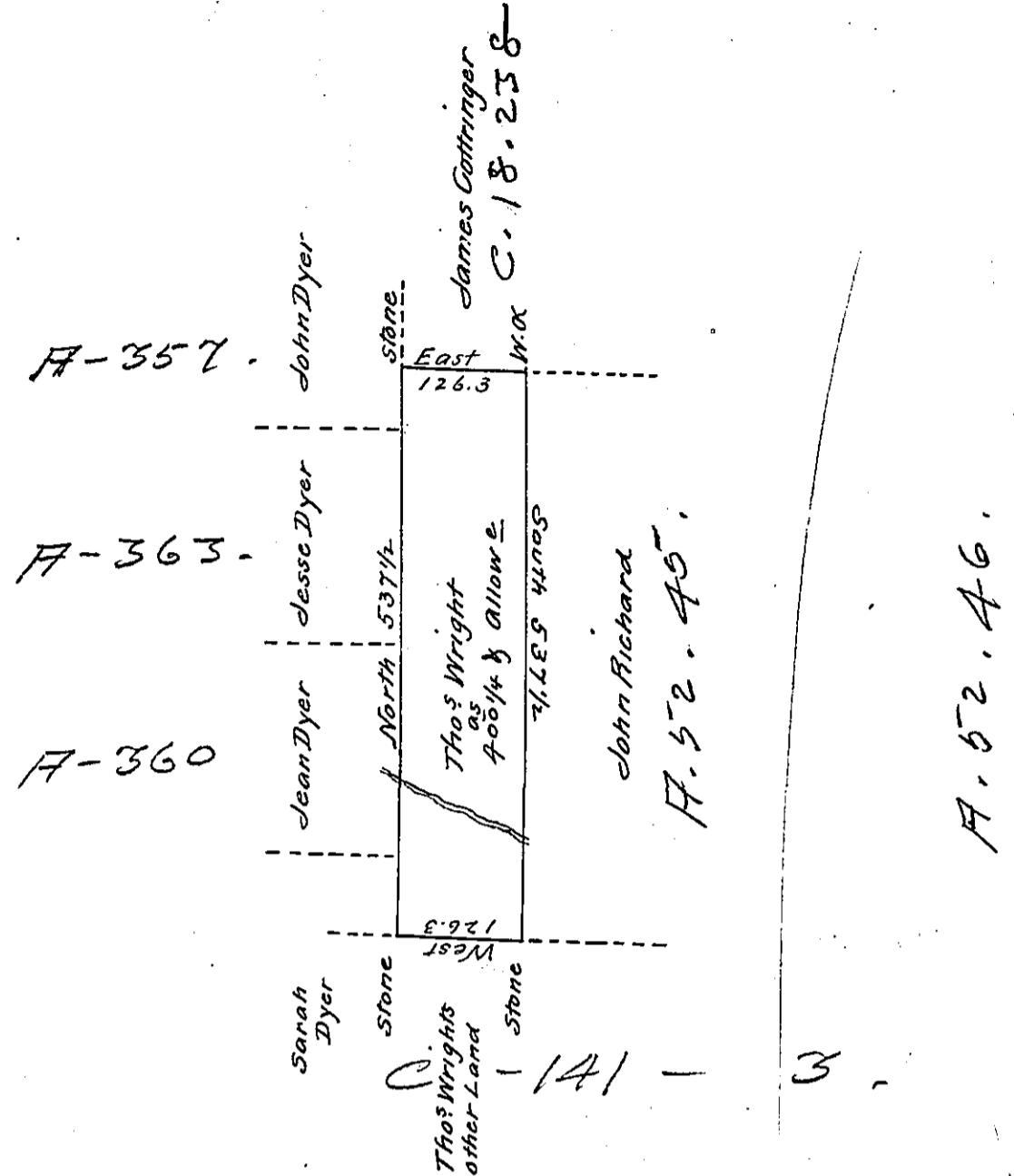


Denison -  
Luzerne



A Draft of a Tract of land called \_\_\_\_\_ Situate on the Water of Lehi  
 Joining land surveyed Jesse Dyer and others in the County of Luzerne  
 Containing four Hundred Acres  $\frac{1}{4}$  & Allowance of Six  $\frac{1}{2}$  Cent for roads &c  
 Surveyed for Thomas Wright the 8<sup>th</sup> Day of June 1792 in pursuance  
 of a Warrant Dated the 4<sup>th</sup> Day of April 1792.  
 by W<sup>m</sup> Gray D.S.

To  
 Daniel Brodhead Esq<sup>r</sup>  
 Surv<sup>r</sup>. Gen<sup>l</sup>

IN TESTIMONY that the above is a copy of the original remaining on file in  
 the Department of Internal Affairs of Pennsylvania, made  
 conformably to an Act of Assembly approved the 16th day of  
 February, 1833, I have hereunto set my Hand and caused  
 the Seal of said Department to be affixed at Harrisburg,  
 this Fifteenth day of June 1910

*Henry Houck*  
 Secretary of Internal Affairs.